



Oneida Lake Association  
PO Box 3536 Syracuse, NY 13220-3536  
info@oneidalakeassociation.org



Greetings!

---

## WHAT'S UP?

---

### A TIMELY MESSAGE FROM YOUR PRESIDENT, (yes THAT one!)

We are all in the COVID-19 Epidemic and for many people all over the world, New York State, and including our Oneida Lake area, anyone at any age can come down with COVID-19. Sadly many people will die from it. *[Let's all prudently heed the advice of the CDC].*

Most all of our OLA members fish, boat, kayak, sail, swim, hunt waterfowl, snowmobile, and enjoy other leisure activities. Each inherently--and always--involves safety measures.

By using common sense and following rules consistently you can keep yourself safe most of the time. Right now there is no room for taking any short cuts. When you are spending your leisure time on or around Oneida Lake and its tributaries, please follow all the rules consistently.

Follow that 6' social spacing rule when you are fishing in your boat, on piers, in waders, and from shore. Even in your vehicle driving to the lake, think if you can take two cars or otherwise if you can increase your spacing and air filtration - that is even better. Also make sure your boat is not too close to other boaters and think safety, being aware of other boaters such as kayaks, canoes, etc. And no alcohol if you're running the boat. Make sure you have your life jackets with you too. Wearing them is best practice - even beyond the mandatory November-April period. *[Water temperature April 5 was only 10 degrees Celsius, or 50 Fahrenheit at the shoreline - colder offshore and below the surface!!! Scott]*

As always, we should be tuned in to the weather conditions. When it's too windy, stay off or get off the lake because we all know how quickly Oneida Lake can get too rough. Also, consistently follow the Fish & Game regulations that are in place for all of us. *[Walleye season is not yet open, and when it does, don't play incidentally-hooked sturgeon.]*

During these tough times we are all dealing with right now, please remember no fish, not even a Walleye, is worth your life, or the life of a family member or friend.

Follow all the rules consistently so that none of our OLA members, their family members, or anyone around our beautiful Oneida Lake loses their life on the water or to COVID-19.

Good luck fishing this season & please stay safe. **Bill Givan**

---

At this time (April 4, 2020) DEC reported that:

- All DEC Campgrounds remained closed at this time, including campsites, boat launches, day use areas, roadways and other facilities. The public is prohibited from being in any DEC campground for any purpose at this time.
- DEC boat launches not within campgrounds are open for launching and retrieving boats. Docks are currently being installed at these boat launches. Bathrooms associated with boat launches remain closed.

On April 7, DEC and State Parks announced that docks are being installed at boat launches across the state. Schedules for boat launch installations can change based on water levels, weather, and ice conditions.

**But, ON APRIL 10 GOVERNOR CUOMO SHUT DOWN ALL LAUNCHES!**

Think positive, and keep watching for it to hopefully be lifted by May 2.

---

**The Village of Sylvan Beach**, as lead agency, has determined that the proposed **East Oneida Lake Water Pollution Abatement Project (EOLWPAP)** Wastewater Treatment and Transportation Facility Improvements will not have a significant adverse environmental impact. The action involves the upgrade to the Wastewater Treatment Plant (WWTP) and Pump Stations including: New and Existing Building Improvements; Carbon Column Re-purpose to Blower Building; Sludge Handling; Mechanicals; Outfall Structure Stabilization; Process Upgrade (Secondary Treatment); Site Soil Improvements; Electrical; Instrumentation and Controls; HVAC; Plumbing; Roofing; Site Piping; Site Grading and Restoration. The project is located in the Village of Sylvan Beach and the Towns of Sullivan, Lenox, Verona, and Vienna.

---

We have previously written about OLA's advocacy to complete sewers around the lake. Notably the pace of impervious development by camp conversion to year-round residences has accelerated in the last 20 years. In parts of Madison, Oswego and Oneida Counties lakeshore properties rely on either old or new septic systems, depending on lot space available. Runoff from storms and snowmelt often tax septic systems. Now, with Covid-19 indefinitely putting more family members in some homes, the 'honey dipper' traffic has increased!

Be cognizant of our **collective need to afford the water quality protections** our lake deserves. The ability and capacity of septic and sewer systems can be limited. And, as [NYSDEC Division of Water](#) points out, clogged treatment systems are expensive to clean out. Guests and renters are reminded that:

*Certain materials flushed down toilets can damage sewer systems, wastewater treatment operations, or private septic systems, even when they are labeled as flushable. Correcting the damage is expensive, so **do not flush** any of the items listed below, no matter how small. Please throw them in the **trash**.*

- \* **diapers**
- \* **baby wipes**
- \* **disinfectant wipes**
- \* **personal hygiene products**

\* *any paper products other than toilet paper (e.g., paper towels, facial tissues, paper napkins)*

---

Remember that past issues of the OLA ENews are achieved on our website, along with many recent Bulletins. Hard copy of all Bulletins are on the shelves of the Syracuse Onondaga County Public Library. We want to duplicate these archives.

**When the library reopens, we ask that any member who can assist us, please contact an OLA Board member; information is on our website.**

We ask for help to (1) compile the names and dates of service of the officers and Directors in each issue, and (2) to scan the older issues (to thumb drive pdf) for posting on our website archives at [www.oneidalakeassociation.org](http://www.oneidalakeassociation.org)

---

As part of OLA's 75th celebration we had this fillet knife emblazoned with the OLA anniversary logo. The Board authorized a price of \$20, or \$25 to also include an annual membership. **If you want one, reach out to us**, and we'll figure out how to get one to you when this coronavirus 'adventure' comes to a close.



Meanwhile, stay separated, clean, healthy, safe, and sane!

---

### **The scheduled OLA Spring Highway Cleanup on April 24, 2020 is POSTPONED.**

Director George Reck advised that *In light of the County Executives decree for a "voluntary" Shelter in Place Order for the next 2 weeks, it would be prudent for me to indefinitely postpone the Highway Cleanup that was scheduled for Friday, April 24.*

---

**HELP!!! OLD MEMBERS: DOES ANYONE HAVE--OR KNOW SOMEONE WHO MAY HAVE--ISSUES OF THE ONEIDA LAKE BULLETIN FROM 1945-1953?** The Board is trying to locate these to scan, and to provide a more complete record to those assembled at the Onondaga County Public Library.

An Agenda item for the upcoming Annual Meeting on April 28 is to recognize former Directors and Presidents of OLA.

Please email [President@OneidaLakeAssociation.org](mailto:President@OneidaLakeAssociation.org) if you know of a past officer, or if you have old Bulletins (from which we can compile a list of the former officers listed therein.)

---

## **ADVOCACY**

### **CLEVELAND PIER**

Former OLA director and president Tom Pierce reports that work is indeed still underway. The construction contractor has stockpiled a variety of materials and is driving sheet pile to stabilize the worksite.

Director Patricia Cerro-Reehil, as well as an unnamed north shore resident, have submitted the photos below.

### **COVE ROAD BOAT LAUNCH**

President Girvan contacted NYSDEC for a status update. The project, under discussion for over 2 decades, is especially important now that other launch sites near Sylvan Beach are closed.

Let us hope that we will soon have photos of the start of work here!



---

Here is a [simple face mask video](#) for you anglers who cannot sew, but likely have a few rolls of blue shop towels in your garage. Give it a try, for you have, like most of us, a lot of unscheduled time on your hands. Otherwise, be optimistic, and get the lawnmower oil changed, the blade sharpened, your motor and trailer readied for use, your PDF's cleaned, and your tackle box organized (if you can find it!)

And if you are paranoid or prudent enough to shop with latex or nitrile gloves, look at this [video for proper removal of gloves](#). And - more important - don't just toss them on the parking lot asphalt ....carry a trash bag, or [find a proper waste receptacle](#). If you are cautious enough to slow your catching a germ, be smart enough to reduce someone *else's* infection!

---

## MEMBER MEMORY

Memories of Verona and Sylvan Beaches by Mike Baretta, OLA Director

*My first recollections of the east end are of the early 1960's, and Uncle Mike and Aunt Millie. They bought property a stone's throw from the Verona Beach Lighthouse and*

*built a new, small camp. On a small, sandy beach across Forest Avenue I fondly remember many carefree, school-free days swimming and playing on the beach with my aunt and other friends. The many sand bars and somewhat deeper water between them, repeated for quite a ways out, made wet romping quiet fun in summer's heat.*

*My aunt and uncle had many friends in nearby camps. Along the beach we enjoyed many camp cookouts and parties over the years. We played ball, horseshoes, and other games sometimes involving 40 people!*

*Then in the mid-1960's they bought a larger camp on the corner of Oneida and Forest Avenues. It had lakefront and "The Point", as was termed the locals of Cozy Corners. Many a day I sat on the dock, just across the canal, and watched the boats enter and leave the lake. And the beautiful sunsets! I've been to Hawaii a couple of times, and Oneida's sunsets rival any of those in the tropics. [See many sunset photos on our website [www.OneidaLakeAssociation.org](http://www.OneidaLakeAssociation.org)].*

*I remember going over to the amusement park and many times playing ski ball, winning stuffed animals, ash trays (remember those?), and other teddy bears, and nick knacks. I rode all the rides, enjoying the roller coaster and bumper cars the most. The Sylvan Beach Amusement Park had events and activities for friends and family and for people of all ages. Built in the 1940's its seaside theme included a boardwalk to landmarks such as the Royal Hotel (built in 1912). Recently a grant has enabled its owners to refurbish and remodel it to resemble the structure of yesteryear. The Goodenour Family partnered with Doug Waterbury to revitalize the amusement park, one of the oldest in the nation. Theirs is a 5-year, \$5 million investment to restore and expand the entire Relio Family Playground.*

*The Verona Lighthouse is one of three on Oneida Lake still in standing today, but the only one still in use. [Others are on Frenchman's Island and at Sylvan Beach, the latter subject of a talk at the OLA Annual Meeting of 200? By .) It was built in 1918 at the entrance to the NYS Barge Canal. Today the Verona Beach Association is overseeing repairs, preservation, and beautification in cooperation with the owner, the NYS Canal Corporation [itself now under the organization of the NY Power Authority after leaving the auspices of the Thruway Authority in 2017 which first managed it in 1992.]*

---

## PLEASE SHARE YOUR THOUGHTS ABOUT OUR 75TH ANNIVERSARY!!!

The OLA would love to hear your thoughts about the Association and the lake. Send us your memories, your anecdotes, your photos, your ideas.  
What does Oneida Lake mean to you?

Write to [OLA75th@gmail.com](mailto:OLA75th@gmail.com)

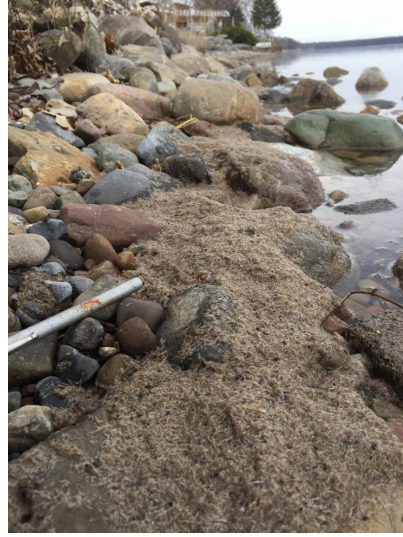
**As you greet your neighbors and friends in the coming months, consider a membership to the Oneida Lake Association! We are concerned that so few lakeside property owners appear unaware of your organization.**

---

## SOUTH SHORE SIGNS OF SPRING!

In the first two weeks of April lakefront residents witnessed an early, robust hatch of midges. The water temperature on April 5 at the shoreline was 10 degrees C. In past years this hatch was a week to 4 weeks later in the year.

Midges only come out during the day if there is cloud cover because they are actually sensitive to light, this is the reason why you will generally see them under the shade of a tree, they hate windy conditions and very dry weather. The non-biting insect can be a valuable early fish-food source.



Right on schedule, cormorants showed up April 9. The first tree swallows came a few days earlier, and the purple martins should arrive in about 2 weeks. Now, if it just stops snowing.....

---

### Talking plastics is news.

In past ENews we relayed some insight into the issue of plastics and microplastics in waterways and oceans. Reading some chemistry recently, here are two paragraphs you might find provocative, or at least somewhat informative.

- According to a February 11 article [www.cen.acs.org](http://www.cen.acs.org) in CE&N magazine, chemical scientists are assembling a first-ever global inventory, cataloging triple the number of chemicals on the market as previous lists. It appears that there are at least 157,000 individual commercial chemicals, 75,000 mixtures, polymers and substances of unknown composition, and 120,000 substances that could not be conclusively identified.
- In another CE&N article I learned acrylic acid is a 3-carbon chemical made from naphtha and propane. It is used for paints, adhesives, and super-absorbent polymers. Ethylene is the world's highest volume petrochemical. Ethylene is produced primarily from naphtha, a long-chain hydrocarbon obtained from refining petroleum. However, *ethane* is a raw material, with a shorter reaction path, to produce ethylene. Most of China's ethane comes from America. The booming US shale gas industry enabled exports to rise from near zero in 2013 to 5.3 million tons in 2018, or five times that of Norway, the only other nation exporting ethane. So what? Well, I bought a *half* gallon of milk (in a plastic jug) recently for \$1.85; then got a gallon of gas for \$1.85!! Cheap gas is a product of the American shale fracking spike. In the long run are we compromising our water and supporting exports to undermine "Buy American"?

For those of you socially isolated and unable to get away from your computer, bookmark this page and browse to your hearts content, for you are unique if you can't find at least one interesting article <https://www.sciencedaily.com/>

---

### Would you like to Help the Oneida Lake Association?

We are looking for dedicated volunteers to serve on the Board of Directors for the Oneida Lake Association. If you'd like to help us carry on the mission of the Oneida Lake Association and help us Preserve and Protect our beautiful lake, this is the time to think seriously about stepping up.

The BOD currently has three Director vacancies. We need individuals who have people

skills and an interest with interaction with the academic and government professionals. Good writing and technology skills are a bonus.

Directors serve 2-year terms, meet once a month, and may spend 3-6 hours a month on OLA business.

Each Director must serve on at least one standing committee, volunteer for special events, and anticipate advancement to an officer's position.

If you have an interest in serving OLA, please reach out to one of the Directors. Our contact info is at our website.

Write out your avocational resume, personal interests, and a professional background summary. Send them by snail or email to any OLA Director, or to

[President@OneidaLakeAssociation.org](mailto:President@OneidaLakeAssociation.org)

We are in particular need of someone who can assist in creating content for this monthly newsletter. Scott Shupe leaves the OLA-BOD this month, and will no longer edit this newsletter, although he will contribute periodically. So it will be vital to ENews readers to have others also contribute articles, questions, and matters of discussion for the good of the organization.

---

## 9 Element Plan Status

OLA, with its concern related to the deleterious effects due to erosion and sedimentation entering the State's largest inland lake, issued a letter to reviewers of the developers of projects discussed in last months ENews.

Mark Burger shared activities from Onondaga County in the Oneida Lake Basin:

- EPF 26 grant preparation to NYS. Working on cost-estimates for implementation projects on 3 beef farms
- Met w/ Onondaga County Legislator Tim Burtis, District 3, to discuss efforts underway on Oneida Lake to help improve water quality, increase attention for the lake, and increase funding availability (3/13/20)

---

*And once the storm is over You won't remember how you made it through, how you managed to survive.*

*You won't even be sure, in fact, that the storm is over.*

*But one thing is certain. When you come out of the storm,*

*You won't be the same person who walked in.*

*That's what this storm is all about.*

Haruki Murakami

A poem from his novel "Kafka on the Shore"

---

## FISHERIES

Oneida Fish Culture Station Manager Bill Evans reported the week of March 23 that *We are under strict protocol not to intermingle folks from other offices or allow the public in the building this year. Therefore we are only using the crew at Oneida for the actual stripping of eggs. That number is 4 permanent staff and 3 seasonal staff, barely enough to operate one stripping station, the treatment station and allow a person to put eggs up.*

Shortly after, the 'storm' caught up with him. Netting was minimized, and the anticipated culturing this year will be only for stocking elsewhere. As the water warmed,

photos of a robust run have been on Facebook, but folks are advised to stay away from the hatchery.

Perhaps more than in recent years, the anglers among us should remain vigilant and report (*see bottom of the page*) poachers who think that no one is watching our creeks.

---

Is Niagara Falls a barrier against fish movement? [New study](#) shows that fishes above and below falls are unlikely to interbreed — vital information for the battle with invasive species in the Great Lakes.

---

So the sunfish are biting. For those of you who like to catch and eat them, rather than selling them, you might want to let the OLA -BOD what **your thoughts are on sunfish** (and yellow perch) angling regulation changes.

As a conversation point, you might want to look at this [interesting video from Minnesota](#).

---

## BOATING SAFETY

The Spring 2020 OLA Bulletin carried a photo of the Air1 helicopter assisting in a boat fire. If you have a fire aboard your boat, FIGHT THE FIRE *only* if you catch it early enough that fire is small and confined to the immediate area where it started. Have one person deploy an extinguisher and another radio or call for help, then put out a distress signal. If the motor catches fire, shut off the fuel supply immediately. Slow or stop the boat, and turn to keep the fire downwind. Disconnect all sources of electrical power. IF YOU HAVE THE SLIGHTEST DOUBT ABOUT IF YOU CAN CONTAIN THE FIRE, DON'T EVEN TRY. Safely evacuate the boat after grabbing PFD's. Burning fiberglass is extremely hot and give off noxious fumes.

In using a fire extinguisher, remember the "PASSword":

- Pull the pin
- Aim the nozzle
- Squeeze the handle
- Sweep from side to side at the base of the fire, using short blasts

Drinking and Driving is not Safe Boating. BWI is DWI, and against the law. A 12 oz beer has an equivalent effect as 1 ½ oz, or 4 oz of wine. Diluting hard liquor with water or fruit juice slows alcohol absorption, but mixing alcohol with a carbonated beverage *increases* absorption, so you get intoxicated more quickly. Remember that alcohol is a depressant; over indulgence causes learned restrictions on social behavior, judgement, balance, vision, and reaction time to be impaired. So, just like watching the weather and wind, watch what and how much you drink when boating.

---

### Member's **FISHING TIPS.**

Feel free to offer up some of **your** short hints, tips, and tricks.

Here are classic tips from H.G. Tapply wrting in Field and Stream:  
<https://www.fieldandstream.com/32-vintage-fishing-tips/>

---

### MEMBER QUESTIONS?

Remember that many of the frequently asked questions about the lake are posted with responses on the website.

Q: Is the Annual Meeting being rescheduled?



A: It is likely that the meeting and elections will be held TBD in early summer.

Sent your questions and opinion to [President@OneidaLakeAssociation.org](mailto:President@OneidaLakeAssociation.org)

**NAVIGATION HAZARDS:** OLA is again aware of a number of beached or submerged trees that have entered the lake, Report snags.  
<http://www.oneidalakeassociation.org/navigation-hazards.htm>

State Parks will place marker bouys on identified hazards. Then what is needed are – in open water - Canal Corp barges bearing the equipment to lift and tow snags. Highway equipment is needed to remove to on-land docking and disposal sites for composting. NYSDEC and USACE permits should be enabled for 'disturbance of bed or banks'. Jurisdictional authorities should cut to the chase and minimize the bureaucratic abdication and overlap.

OLA hopes that one of these agencies takes the lead, supported by appropriate legislative funding, in organizing a plan for the inevitable removal.

**ONEIDA LAKE SIGNS.** There are 20 signs around the lake bearing advertising support for the OLA's mission. At this time there is about a dozen firms of these advertisers who are no longer in business. If your company has interest in adopting one of these signs, and promoting both your business and OLA at a nominal expense, please contact an OLA Director or email [President@OneidaLakeAssociation.org](mailto:President@OneidaLakeAssociation.org)

**Pay your dues, and HELP PROTECT ONEIDA LAKE!!!!**

**\$8 annually**

**Recruit your non-member neighbors and friends TO JOIN US!**



**Donate**

Help OLA function. Memorials and contributions to our program are most welcome.

OLA is a 501(c)4 organization serving protection of the Oneida Lake environment.

Memorial remembrance\$ take the edge off some of our expenses.



[Website](#) [Who We Are](#) [What We Do](#) [How to Help](#)

OLA is a 501(c)(4) not-for-profit organization.

The Oneida Lake Association is a member of the New York State Conservation

Council <http://www.nyscc.com/> and the New York State Federation of Lake Associations <http://www.nysfola.org/>.

**Report environmental violations.** Please remember to obey all laws, rules, regulations, and codes of ethics as they pertain to boating, fishing, hunting, and management of Oneida Lake and its drainage basin. Be civil. **1-844-DEC-ECOS (1-844-332-3267) or 1-800-TIPP DEC (1-800-847-7332)**

*Edited by Scott Shupe and John Harmon.*

*Send us your notes and articles for use in future ENews!*