

New York State



ONEIDA

FISH CULTURAL STATION

- Located on north shore of Oneida Lake in Village of Constantia
- Primary function is raising walleye
- Secondary production includes Lake Sturgeon, Round Whitefish, Cisco
- Fish are stocked into NYS public waters
- Hatchery was built in 1992, approx 18k sq ft, including an office, visitor center, rearing room, research room and misc. rooms for mechanical equipment.
- Water source is Scriba Creek, gravity fed to hatchery.
- Open daily April 1-Sept 1 8am-3:30pm and tours are available.

2018 Walleye Production

- Collected 16,878 fish (vs 24,790 in 2017), stripped 4518 females (vs 4845 in 2017)
- 324,000,000 eggs (vs 285,300,000 in 2017) with 153,220,000 fry into Oneida Lake
- Only set 10 nets this year vs 12 nets, removed 1 part way through!



·Adults are hand stripped into a mixing bowl using 2 males to 1 female.



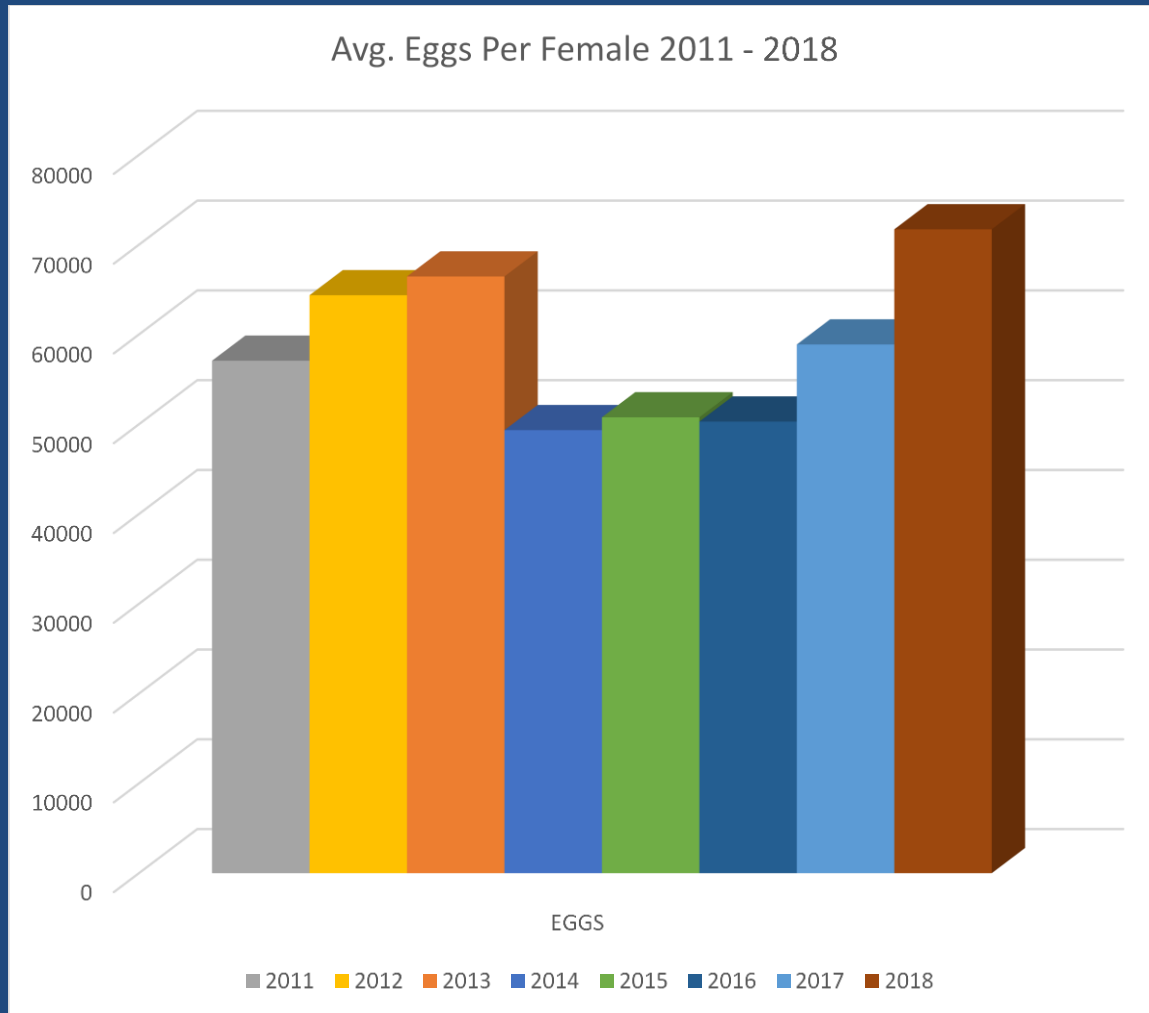


2017 Female – 13.2 lbs
prior to egg removal,
10.8 lbs after eggs
expressed.



Overall fish seemed larger.
Many males could easily be
mistaken as females.

- Eggs are mixed with tannic acid to remove adhesive coating, rinsed and water hardened for 1 hour.
- While water hardening they are disinfected with iodophor.
- They are then placed into McDonald type incubation jars with flows of 1-2gpm.
- Eggs per female has increased over the years...gobies?



- Eggs incubate for ~21 days, formalin is used to control fungus.
- Majority of fry are stocked immediately after hatching.
- Oneida Lake is stocked using a pontoon boat. Other waters and transfers to other hatcheries are via truck.



- 518,000 fry will be kept at Oneida for intensive culture
 - Immersed in an Oxytetracycline (OTC) bath to mark otolith.
 - Stocked into 28 indoor raceways (25' X 45" X 2' ~1400gal)
 - Fry will be fed live brine shrimp for 35-50 days and then stocked at 1.5".
 - 6 Tanks will be fed HUFA enriched artemia

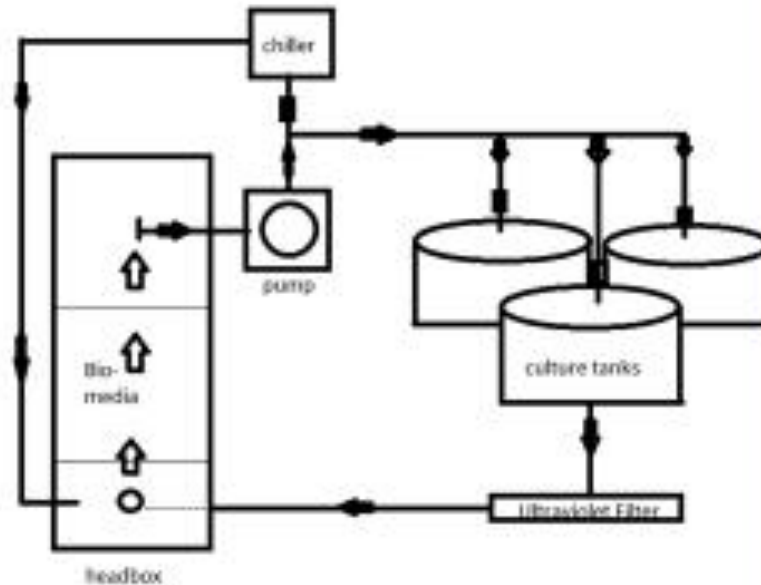


Lake Sturgeon

- Eggs collected from wild fish from the St. Lawrence River and delivered to Oneida Hatchery.
- Eggs are incubated in McDonald jars with 1-2 gpm flow.



Cisco (Lake Herring) Proposal for Keuka Lake



Culture tanks are currently set up and plumbing goes to the Ultraviolet filter located in a floor trench.

An adjacent rectangular tank can be used for a headbox where water would upwell in at one end and be pumped out at the other. Biomedica would be used in the tank.

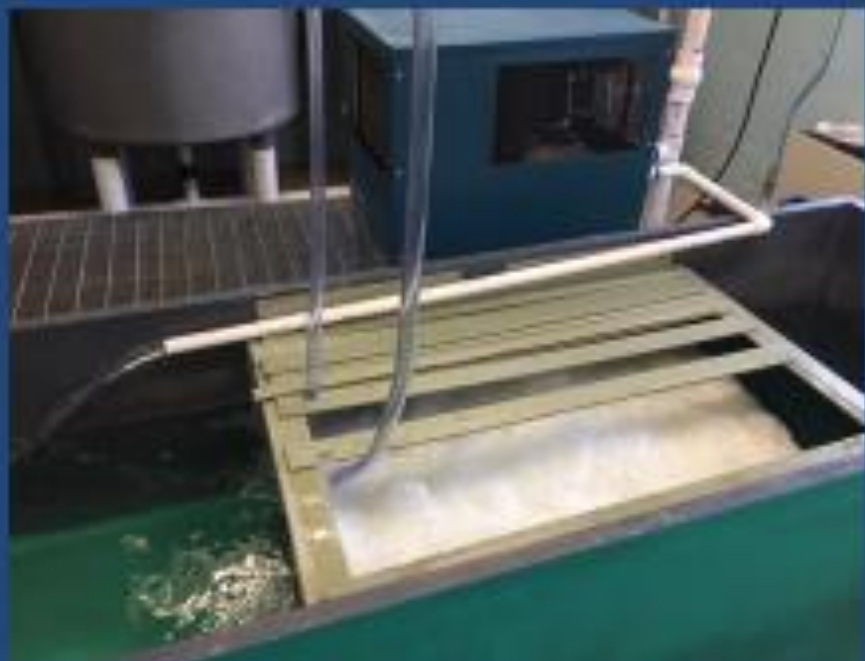
Water would be directed to the chiller and culture tanks from the pump

Water direction is shown via arrow.

Square blocks indicate valves to control flow

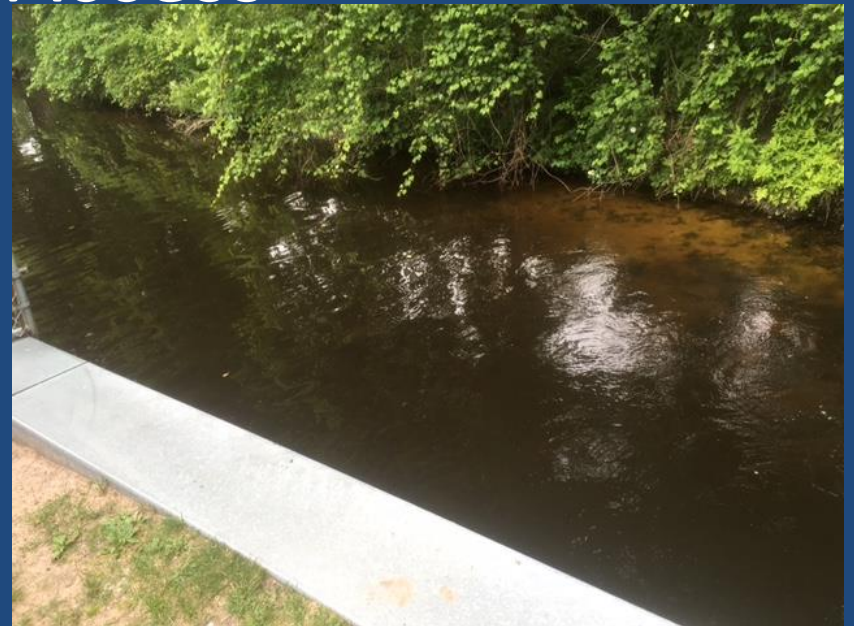
Before...After







Fishing Access





Wheelchair Accessible Area







First Boat in After 2 Day Winds

- Additional aeration lines were placed into tanks to help revive distressed fish.
- Later in the day, fish were consolidated into one tank.
- Mortality count was 675 walleye lost.



- Each Net has 4 anchors holding it on bottom. Some nets were tangled but there were no nets drifting or lost.
- Power outage? Generator back up and water is gravity fed
- That strength and direction has not been seen in 30-50yrs during an egg take.

Waves on North Shore 4-15-18



-Rumor of losing 10,000 walleye??? Run lasts 7-10 days!
 Summary Poster in Hatchery Lobby

New York State Oneida Fish Cultural Station Walleye Egg Collection & Production

Year	# of Adult Walleyes Collected *	# of Females Stripped	# of Walleye Eggs Collected	Fry Stocked	Pond Fingerlings Produced & Stocked **	Fall or Spring Walleye Yearlings
2018	16,447	4,518	324 MILLION			
2017	24,794	4,845	298 MILLION	232 MILLION		130,960 * 30 DAY FINGERLINGS
2016	18,407	5,654	284 MILLION	213 MILLION	141,470	53,100 * 30 DAY FINGERLINGS
2015	13,462	5,176	263 MILLION	205 MILLION	257,000	312,280 * 50 DAY FINGERLINGS
2014	12,906	5,873	290 MILLION	212 MILLION	223,000	401,050 * 50 DAY FINGERLINGS
2013	21,161	4,848	322 MILLION	203 MILLION	747,000	40,000
2012	13,107	4,495	290 MILLION	207 MILLION	800,000	65,000
2011	20,000	5,732	320 MILLION	208 MILLION	611,000	87,000

* Walleye adult figures do not reflect Lake population levels. The Hatchery stops netting & handling fish when egg requirements are met.

** Pond fingerlings are produced & stocked from N.Y.S. South Oteselic & Chautauqua Fish Hatcheries.

For the Record...

- Fingerling walleye are no longer produced due to increased water temps

- 12 Trap nets have been used since 2004, will be using 9-10 now

- “Each spring, DEC workers and volunteers net spawning walleye generating millions of walleye fry”? Volunteers rarely do this. Any volunteer has to be approved by the manager. One volunteer assisted staff one day this year, happened to be interviewed by the Watertown Daily Times and had several inaccuracies. The same article stated “Erika Stoddard was one of the workers on hand...”

- Tour Guides are valuable volunteers but do not net, spawn or handle fish.

- If you are writing an article and want it checked for accuracy just let me know.



